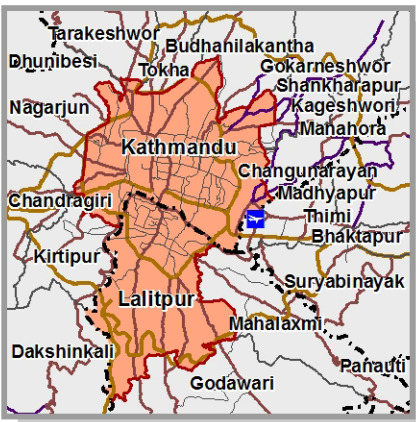


Administrative Boundary



- Legend**
- Airport
 - Administrative Boundary**
 - International
 - Province
 - District
 - Metropolitan
 - Sub Metropolitan
 - Urban Municipality
 - Rural Municipality
 - Local Unit**
 - Metropolitan City
 - Sub Metropolitan City
 - Urban Municipality
 - Rural Municipality
 - Designated Area
 - Road Networks**
 - National Highway
 - Mid-Hill Highway
 - Major Feeder Road
 - Minor Feeder Road
 - Postal Road
 - Strategic Urban Road

Data Source:
 Admin Boundary: Department of Survey
 Airport: Department of Survey & ICIMOD
 Road Network: Department of Roads

Note* :
 This is a living document. We will be continuously editing and updating with revisions.

13 Districts

3 Metropolitan City
1 Sub-Metropolitan City

41 Urban Municipality
74 Rural Municipality

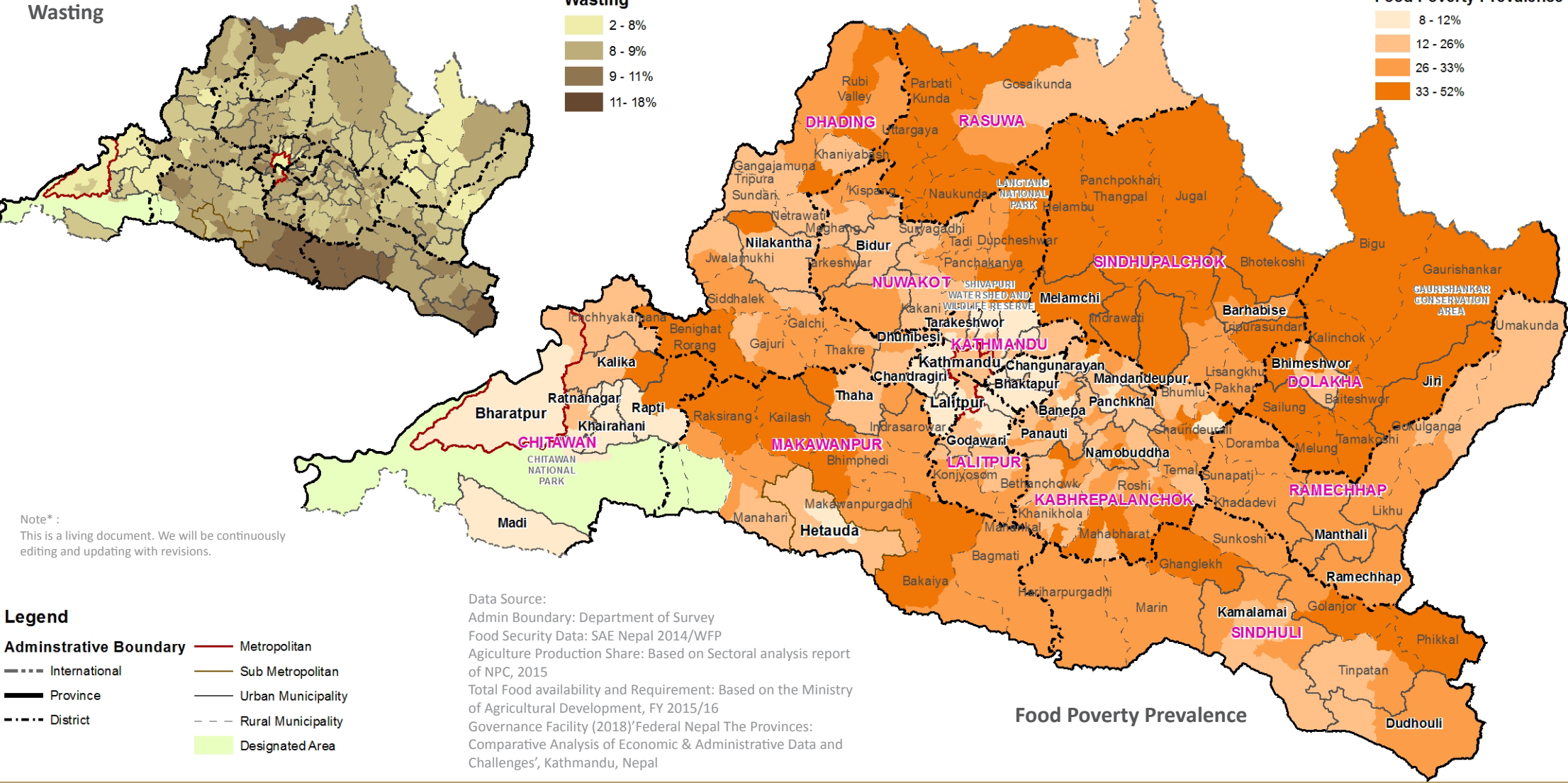
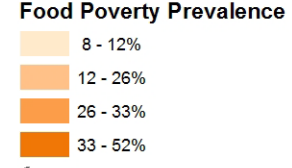
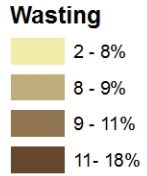
Designated Area

- Gaurishankar Conservation Area
- Langtang National Park
- Shivapuri Watershed & Wildlife Reserve
- Chitawan National Park



Food & Nutrition

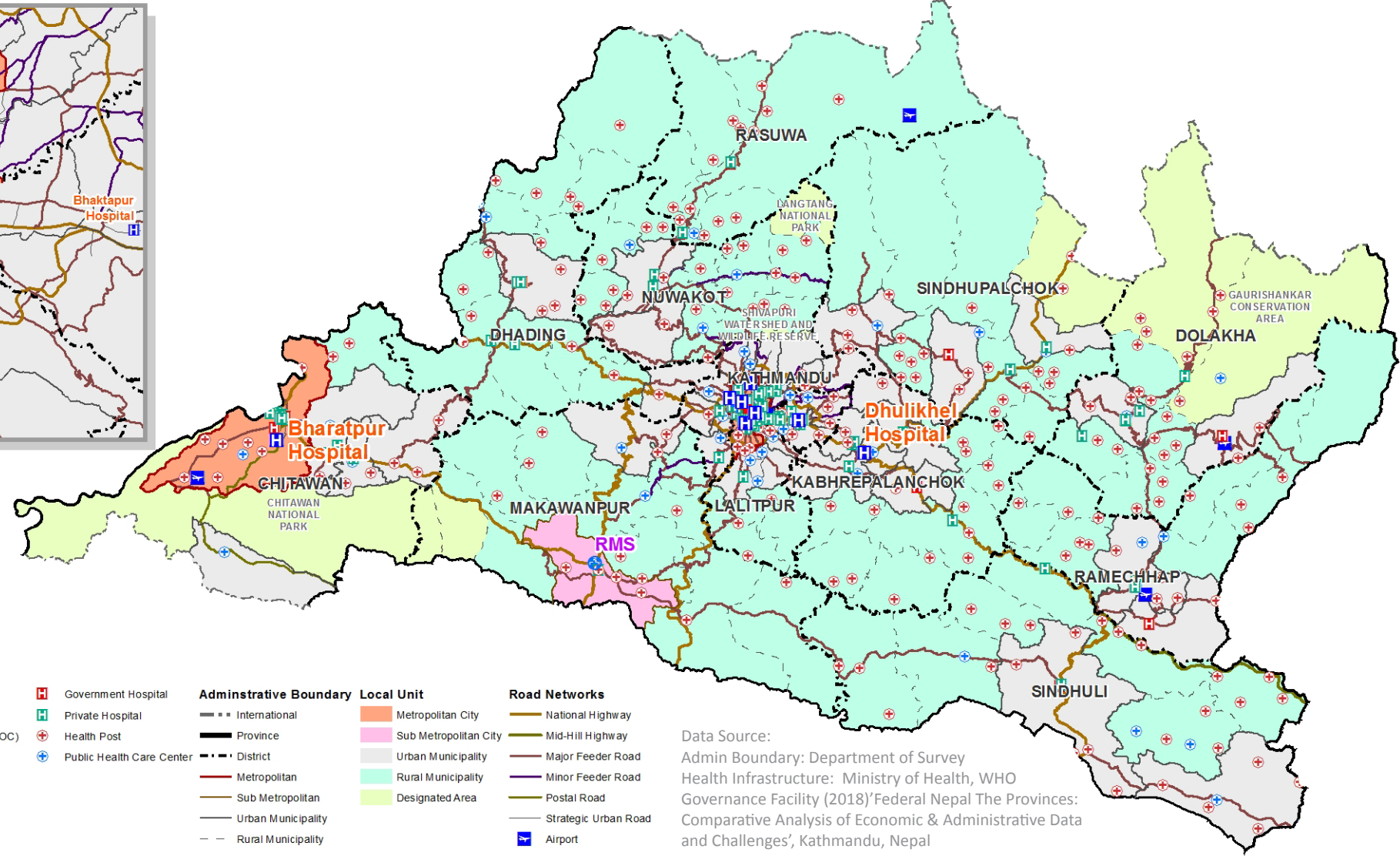
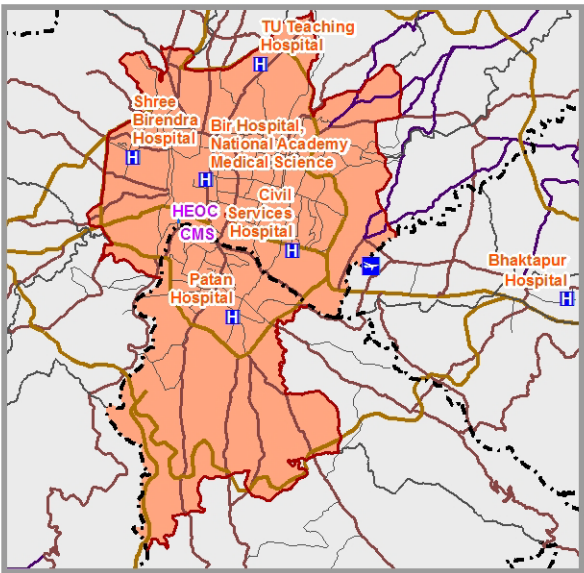
Wasting



Note* :
 This is a living document. We will be continuously editing and updating with revisions.

Agriculture Production Share **22.99%** **690,901 Mt** Total Available Food
1,225,930 Mt Food Requirement

Health Services



Legend

- Hub Hospital
 - Government Hospital
 - Private Hospital
 - Health Emergency Operation Center (HEOC)
 - Provincial Health Emergency Operation Center (PHEOC)
 - Central Medical Store (CMS)
 - Regional Medical Store (RMS)
 - Health Post
 - Public Health Care Center
- Administrative Boundary**
- International
 - Province
 - District
 - Metropolitan
 - Sub Metropolitan
 - Urban Municipality
 - Rural Municipality
- Local Unit**
- Metropolitan City
 - Sub Metropolitan City
 - Urban Municipality
 - Rural Municipality
 - Designated Area
- Road Networks**
- National Highway
 - Mid-Hill Highway
 - Major Feeder Road
 - Minor Feeder Road
 - Postal Road
 - Strategic Urban Road
 - Airport

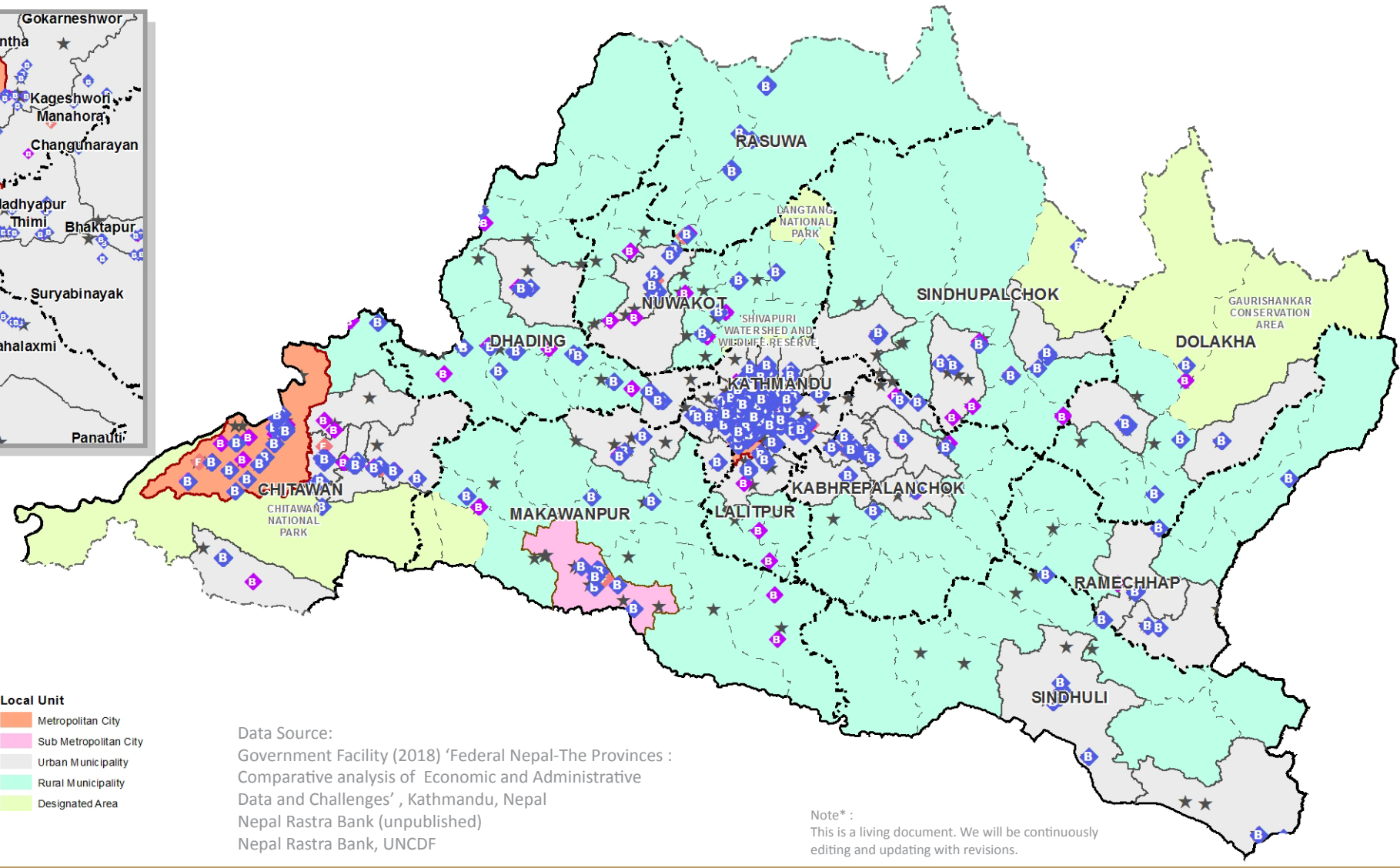
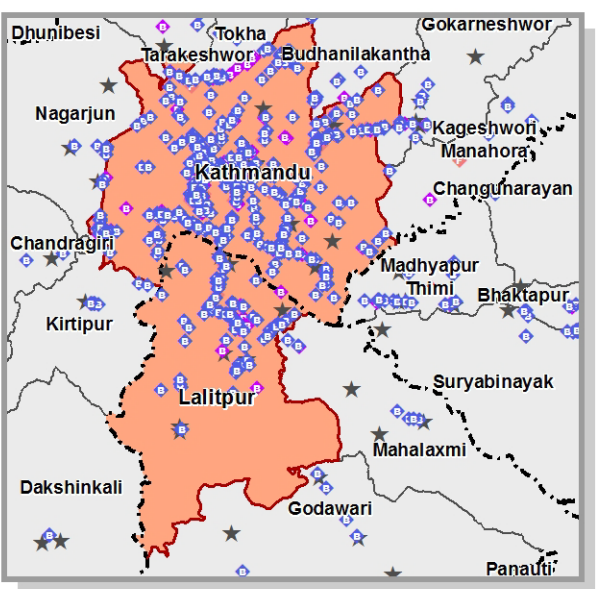
Data Source:
 Admin Boundary: Department of Survey
 Health Infrastructure: Ministry of Health, WHO Governance Facility (2018) 'Federal Nepal The Provinces: Comparative Analysis of Economic & Administrative Data and Challenges', Kathmandu, Nepal

Note* :
 This is a living document. We will be continuously editing and updating with revisions.

Total Public Health Facilities	885	Non-Public Health Facilities	1057	8 Hub Hospital	43 Primary Health Centre	61 Community Health Unit
				34 Hospital (Public)	640 Health Post	18 Other Health Facility
				1 Central Medical Store	90 Urban Health Centre	1 Regional Medical Store
						1 HEOC



Financial Services



Legend

Commercial Bank	Administrative Boundary	Local Unit
Development Bank	International	Metropolitan City
Finance	Province	Sub Metropolitan City
Microfinance	District	Urban Municipality
	Metropolitan	Rural Municipality
	Sub Metropolitan	Designated Area
	Urban Municipality	
	Rural Municipality	

Data Source:
 Government Facility (2018) 'Federal Nepal-The Provinces : Comparative analysis of Economic and Administrative Data and Challenges', Kathmandu, Nepal
 Nepal Rastra Bank (unpublished)
 Nepal Rastra Bank, UNCDF

Note* :
 This is a living document. We will be continuously editing and updating with revisions.

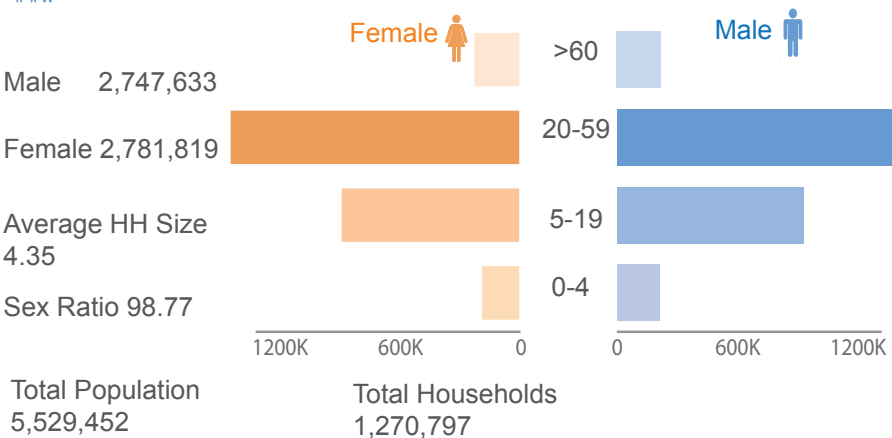
Total Financial Institutions
1,158

871 Commercial Banks
 221 Development Banks

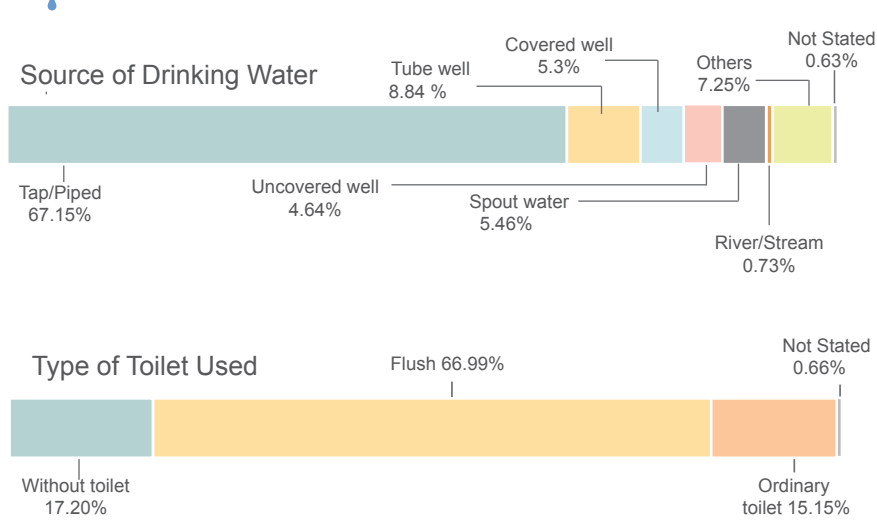
66 Finance

5,293
 Population per Branch

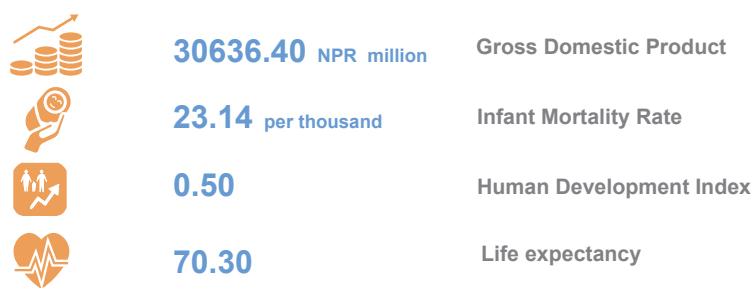
POPULATION



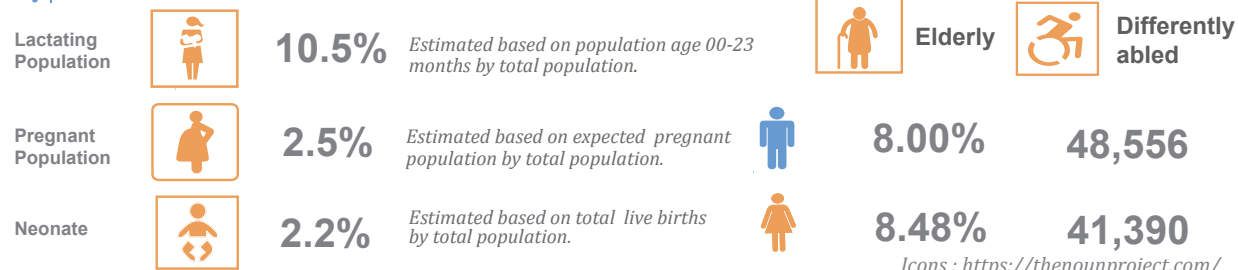
WATER AND SANITATION



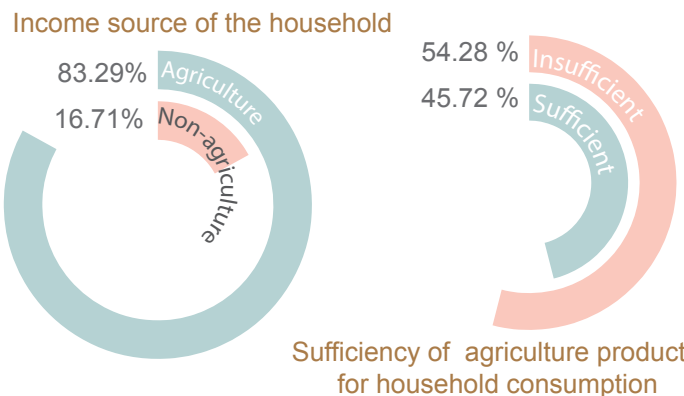
HUMAN DEVELOPMENT INDICATOR



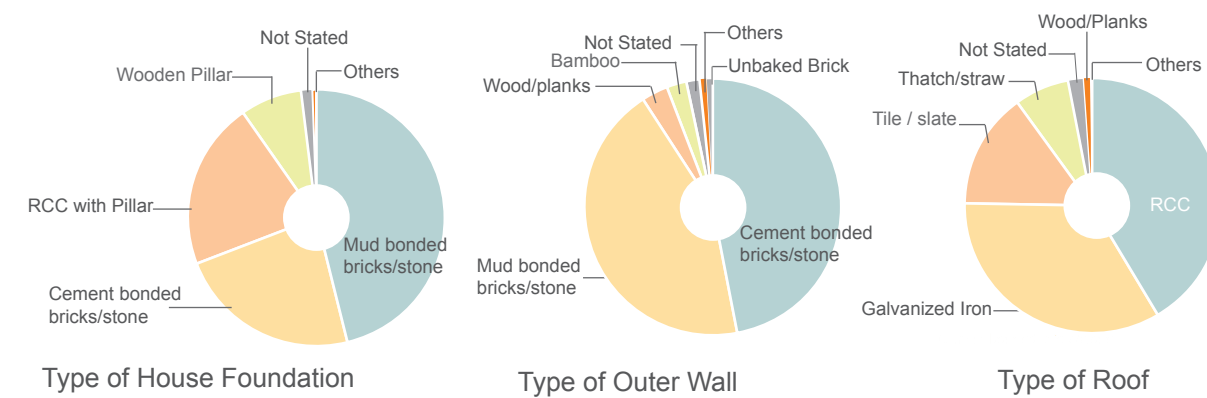
VULNERABLE



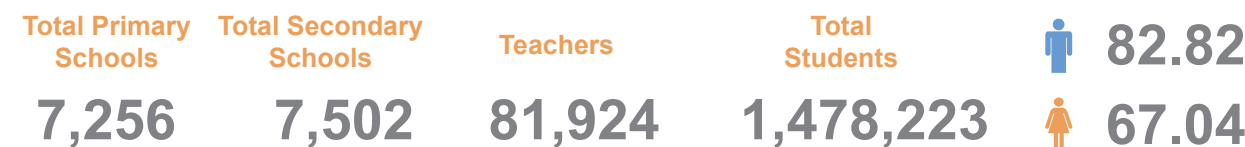
FOOD



SHELTER



EDUCATION



Sources

Population/WASH/Differently able/Elderly/Shelter: Province Summary Population Census 2011

Human Development/Education:

Government Facility (2018) 'Federal Nepal-The Provinces: Comparative analysis of Economic and Administrative Data and Challenges (Nepal Human Development Report, 2014 & Population Monograph of Nepal Volume II, 2014; Flash Report 2016/17, DoE

Vulnerable (Neonate, Pregnant & Lactating):

Calculated from Annual Report, DoHS (2016/17)

Note*: This is a living document. We will be continuously editing and updating with revisions.